



SUPER  
PLASTOCHEM

OVER **1200** BRANDS  
Across India Vouch for our  
Quality & Services



We Know - All About Containers

Since our founding,  
we have helped inventors bring their ideas  
from concept to shelf.

[www.superplastochem.com](http://www.superplastochem.com)

Quality is prime not negotiable

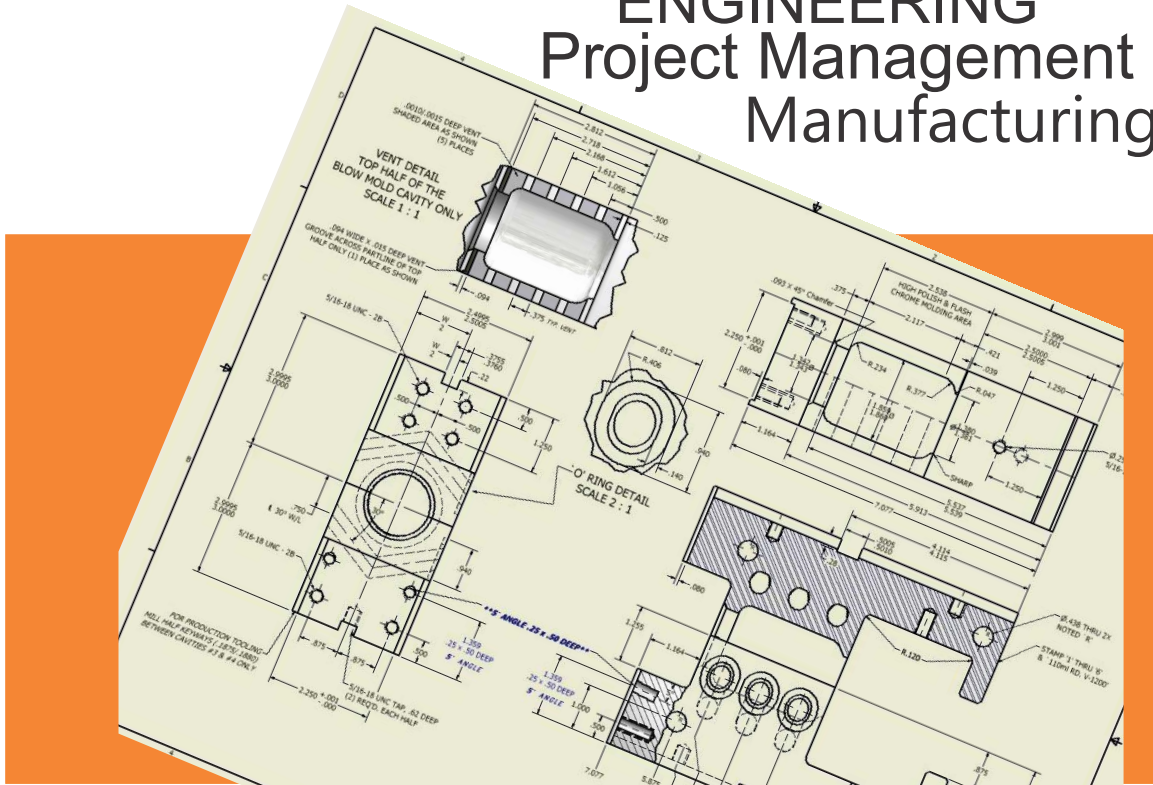
We are here to help and guide you  
with all phases of product development and delivery

# Product Design

# ENGINEERING

# Project Management

# Manufacturing



## About us :



- The company was established as Preet Plastics in 1995 at Chandigarh. In the expansion plan in 2015 in two new companies Super Plasto Chem in Chandigarh and to Sneha Polymers in Baddi (H.P).
- Super Plasto carries a enrich experience of 26 years in this field of plastic containers.
- We are a complete manufacturer of Custom Plastic Injection, Blow & PET Stretched moulded products, offering a comprehensive range of quality products in PET, HDPE & PP.
- We serve the following Industries
  - Nutraceutical industries
  - Foods industries
  - Chemicals industries
  - Home care & Personal care
  - Pharmaceutical industries.
- We consistently provide our customers design support, technical support, consistent supply and the capacity to innovate and design new packaging forms.
- Our manufacturing facilities provide a greater depth of experience and multiple of material ranging from more traditional moulding materials to newly developed resins with the capacity to produce both extrusion and injection blow moulded containers.

## Some of Our Clients :



Total Height (Incl. Cap)



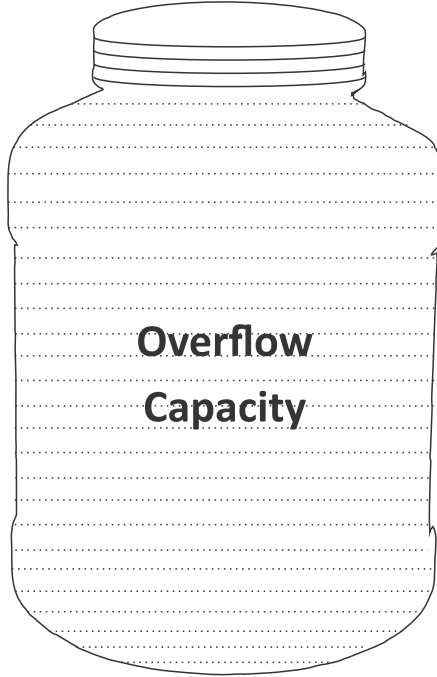
Height (without Cap)



Neck Dia (Incl. Thread)



Neck (without Thread)



**Overflow  
Capacity**

Label Notch (Paper)



Label Notch (Sleeve)



Body Dia





**SPC-SP120P01**

S.No.	Parameter	Cap Size In MM (+0.5)
1.	Body Dia	120 mm 200
2.	Height (without Cap)	279
3.	Neck (without Thread)	115.62
4.	Neck Dia (Incl. Thread)	119.68
5.	Label Notch	143.56
6.	Total Height (Incl. Cap)	280

**Overflow Capacity 7560 ml**

**Material in use PET**



**SPC-SP120P02**

S.No.	Parameter	Cap Size In MM (+0.5)
1.	Body Dia	120 mm 198
2.	Height (without Cap)	274.75
3.	Neck (without Thread)	114
4.	Neck Dia (Incl. Thread)	118.58
5.	Label Notch	170
6.	Total Height (Incl. Cap)	280.75

**Overflow Capacity 7300 ml**

**Material in use PET**



**SPC-SP120P03**

S.No.	Parameter	Cap Size In MM (+0.5)
1.	Body Dia	120 mm 171
2.	Height (without Cap)	317
3.	Neck (without Thread)	116.38
4.	Neck Dia (Incl. Thread)	118.92
5.	Label Notch	199
6.	Total Height (Incl. Cap)	320.50

**Overflow Capacity 6700 ml**

**Material in use PET**



**SPC-SP120P4**

S.No.	Parameter	Cap Size In MM (+0.5)
1.	Body Dia	120 mm 154.50
2.	Height (without Cap)	283.50
3.	Neck (without Thread)	116.05
4.	Neck Dia (Incl. Thread)	119.68
5.	Label Notch	103.36
6.	Total Height (Incl. Cap)	293.50

**Overflow Capacity 4870 ml**

**Material in use PET**



**SPC-SP120P05**

S.No.	Parameter	Cap Size In MM (+0.5)
1.	Body Dia	120 mm 153
2.	Height (without Cap)	250
3.	Neck (without Thread)	116.15
4.	Neck Dia (Incl. Thread)	118.63
5.	Label Notch	147.13
6.	Total Height (Incl. Cap)	251.75

**Overflow Capacity 3970 ml**

**Material in use PET**



**SPC-SP120P06**

S.No.	Parameter	Cap Size In MM (+0.5)
1.	Body Dia	120 mm 159
2.	Height (without Cap)	247
3.	Neck (without Thread)	116.54
4.	Neck Dia (Incl. Thread)	117.08
5.	Label Notch	147.45
6.	Total Height (Incl. Cap)	251

**Overflow Capacity 3360 ml**

**Material in use PET**



**SPC-SP120P07**

S.No.	Parameter	Cap Size In MM (+0.5)
1.	Body Dia	120 mm 142
2.	Height (without Cap)	199
3.	Neck (without Thread)	116.65
4.	Neck Dia (Incl. Thread)	119.23
5.	Label Notch	61
6.	Total Height (Incl. Cap)	201.50

**Overflow Capacity 2800 ml**

**Material in use PET**



**SPC-SP120P08**

S.No.	Parameter	Cap Size In MM (+0.5)
1.	Body Dia	120 mm 143
2.	Height (without Cap)	184
3.	Neck (without Thread)	115.33
4.	Neck Dia (Incl. Thread)	119.35
5.	Label Notch	117.67
6.	Total Height (Incl. Cap)	187

**Overflow Capacity 2600 ml**

**Material in use PET**





**SPC-SP120P09**

S.No.	Parameter	Cap Size In MM (+0.5)
1.	Body Dia	120 mm 130.25
2.	Height (without Cap)	150.50
3.	Neck (without Thread)	115.54
4.	Neck Dia (Incl. Thread)	118.39
5.	Label Notch	102
6.	Total Height (Incl. Cap)	153.25

**Overflow Capacity 1750 ml**

**Material in use PET**



**SPC-SP120H01**

S.No.	Parameter	Cap Size In MM (+0.5)
1.	Body Dia	120 mm 204
2.	Height (without Cap)	295.50
3.	Neck (without Thread)	112.24
4.	Neck Dia (Incl. Thread)	118.90
5.	Label Notch	189.30
6.	Total Height (Incl. Cap)	299

**Overflow Capacity 8150 ml**

**Material in use HDPE**



**SPC-SP120H02**

S.No.	Parameter	Cap Size In MM (+0.5)
1.	Body Dia	200
2.	Height (without Cap)	265
3.	Neck (without Thread)	116.20
4.	Neck Dia (Incl. Thread)	120
5.	Label Notch	155
6.	Total Height (Incl. Cap)	268

**Overflow Capacity 7120 ml**

**Material in use HDPE**



**SPC-SP120H03**

S.No.	Parameter	Cap Size In MM (+0.5)
1.	Body Dia	141
2.	Height (without Cap)	235
3.	Neck (without Thread)	106.05
4.	Neck Dia (Incl. Thread)	107.81
5.	Label Notch	160
6.	Total Height (Incl. Cap)	239

**Overflow Capacity 3300 ml**

**Material in use HDPE**



**SPC-SP120H04**

S.No.	Parameter	Cap Size In MM (+0.5)
1.	Body Dia	120 mm 140
2.	Height (without Cap)	185
3.	Neck (without Thread)	116.80
4.	Neck Dia (Incl. Thread)	119.6
5.	Label Notch	117.30
6.	Total Height (Incl. Cap)	187

**Overflow Capacity** 2500 ml

**Material in use** HDPE



**SPC-SP142H01**

S.No.	Parameter	Cap Size In MM (+0.5)
1.	Body Dia	142 X 92 mm 138.15, 89.30
2.	Height (without Cap)	127
3.	Neck (without Thread)	137.11 X 91
4.	Neck Dia (Incl. Thread)	138.87 X 92.40
5.	Label Notch	86.05
6.	Total Height (Incl. Cap)	131.34

**Overflow Capacity** 1130 ml

**Material in use** HDPE

# PET CONTAINERS





**SPC-SP100H01**

S.No.	Parameter	Cap Size In MM (+0.5)
1.	Body Dia	100 mm 96.84
2.	Height (without Cap)	193.56
3.	Neck (without Thread)	94.52
4.	Neck Dia (Incl. Thread)	96.26
5.	Label Notch	157
6.	Total Height (Incl. Cap)	194.60

**Overflow Capacity 1370 ml**

**Material in use HDPE**



**SPC-SP100H02**

S.No.	Parameter	Cap Size In MM (+0.5)
1.	Body Dia	100 mm 98.07
2.	Height (without Cap)	179
3.	Neck (without Thread)	96.90
4.	Neck Dia (Incl. Thread)	98.54
5.	Label Notch	142.60
6.	Total Height (Incl. Cap)	180

**Overflow Capacity 1320 ml**

**Material in use HDPE**



**SPC-SP95H01**

S.No.	Parameter	Cap Size In MM (+0.5)
1.	Body Dia	95.91
2.	Height (without Cap)	194
3.	Neck (without Thread)	91.21
4.	Neck Dia (Incl. Thread)	92.52
5.	Label Notch	153
6.	Total Height (Incl. Cap)	195.65

**Overflow Capacity** 1300 ml

**Material in use** HDPE



**SPC-SP95H02**

S.No.	Parameter	Cap Size In MM (+0.5)
1.	Body Dia	105.35
2.	Height (without Cap)	144.48
3.	Neck (without Thread)	90.56
4.	Neck Dia (Incl. Thread)	92.81
5.	Label Notch	82.50
6.	Total Height (Incl. Cap)	156

**Overflow Capacity** 1200 ml

**Material in use** HDPE



**SPC-SP90H01**

S.No.	Parameter	Cap Size In MM (+0.5)
1.	Body Dia	90.99
2.	Height (without Cap)	161.59
3.	Neck (without Thread)	85.60
4.	Neck Dia (Incl. Thread)	88.60
5.	Label Notch	130.22
6.	Total Height (Incl. Cap)	163.03

**Overflow Capacity** 1000 ml

**Material in use** HDPE



**SPC-SP90H02**

S.No.	Parameter	Cap Size In MM (+0.5)
1.	Body Dia	88.85
2.	Height (without Cap)	121.32
3.	Neck (without Thread)	88.50
4.	Neck Dia (Incl. Thread)	89.22
5.	Label Notch	82.78
6.	Total Height (Incl. Cap)	123.20

**Overflow Capacity** 720 ml

**Material in use** HDPE



**SPC-SP90H03**

S.No.	Parameter	Cap Size In MM (+0.5)
1.	Body Dia	92.19
2.	Height (without Cap)	107.90
3.	Neck (without Thread)	85.22
4.	Neck Dia (Incl. Thread)	87.06
5.	Label Notch	87
6.	Total Height (Incl. Cap)	109.50

**Overflow Capacity 680 ml**

**Material in use HDPE**



**SPC-SP83H01**

S.No.	Parameter	Cap Size In MM (+0.5)
1.	Body Dia	103.89
2.	Height (without Cap)	147.83
3.	Neck (without Thread)	80.30
4.	Neck Dia (Incl. Thread)	80.90
5.	Label Notch	71.56
6.	Total Height (Incl. Cap)	150.48

**Overflow Capacity 1180 ml**

**Material in use HDPE**





**SPC-SP83H02**

S.No.	Parameter	Cap Size In MM (+0.5)
1.	Body Dia	83 mm 95.02
2.	Height (without Cap)	124.72
3.	Neck (without Thread)	79.45
4.	Neck Dia (Incl. Thread)	81.38
5.	Label Notch	83.40
6.	Total Height (Incl. Cap)	125.85

**Overflow Capacity 820 ml**

**Material in use HDPE**



**SPC-SP78H01**

S.No.	Parameter	Cap Size In MM (+0.5)
1.	Body Dia	78 mm 88.45
2.	Height (without Cap)	111.16
3.	Neck (without Thread)	74.72
4.	Neck Dia (Incl. Thread)	76.96
5.	Label Notch	73.07
6.	Total Height (Incl. Cap)	118.64

**Overflow Capacity 610 ml**

**Material in use HDPE**



**SPC-SP73H01**

S.No.	Parameter	Cap Size In MM (+0.5)
1.	Body Dia	75.52
2.	Height (without Cap)	144.13
3.	Neck (without Thread)	71.12
4.	Neck Dia (Incl. Thread)	72.32
5.	Label Notch	118.95
6.	Total Height (Incl. Cap)	145.95

**Overflow Capacity 630 ml**

**Material in use HDPE**



**SPC-SP73H02**

S.No.	Parameter	Cap Size In MM (+0.5)
1.	Body Dia	83.40
2.	Height (without Cap)	110.01
3.	Neck (without Thread)	72.65
4.	Neck Dia (Incl. Thread)	73.65
5.	Label Notch	69.60
6.	Total Height (Incl. Cap)	111.17

**Overflow Capacity 550 ml**

**Material in use HDPE**

# Sleeve Containers







**SPC-SP100P01**

S.No.	Parameter	Cap Size In MM (+0.5)
1.	Body Dia	100 mm 111
2.	Height (without Cap)	223
3.	Neck (without Thread)	95.81
4.	Neck Dia (Incl. Thread)	98.77
5.	Label Notch	76.68
6.	Total Height (Incl. Cap)	225.86

**Overflow Capacity 2290 ml**

**Material in use PET**



**SPC-SP100P02**

S.No.	Parameter	Cap Size In MM (+0.5)
1.	Body Dia	100 mm 88.50, 136.20
2.	Height (without Cap)	139.85
3.	Neck (without Thread)	78.08
4.	Neck Dia (Incl. Thread)	82.33
5.	Label Notch	88.78
6.	Total Height (Incl. Cap)	140.77

**Overflow Capacity 1130 ml**

**Material in use PET**



**SPC-SP83P01**

S.No.	Parameter	Cap Size In MM (+0.5)
		83 mm
1.	Body Dia	103.69
2.	Height (without Cap)	147.06
3.	Neck (without Thread)	79.10
4.	Neck Dia (Incl. Thread)	81.15
5.	Label Notch	90.54
6.	Total Height (Incl. Cap)	150.32

**Overflow Capacity 1220 ml**

**Material in use PET**



**SPC-SP83P02**

S.No.	Parameter	Cap Size In MM (+0.5)
		83 mm
1.	Body Dia	100.55
2.	Height (without Cap)	154.76
3.	Neck (without Thread)	79.59
4.	Neck Dia (Incl. Thread)	81.90
5.	Label Notch	69.45
6.	Total Height (Incl. Cap)	155.70

**Overflow Capacity 1190 ml**

**Material in use PET**



**SPC-SP83P03**

S.No.	Parameter	Cap Size In MM (+0.5)
1.	Body Dia	83 mm 95.06
2.	Height (without Cap)	169.75
3.	Neck (without Thread)	79.76
4.	Neck Dia (Incl. Thread)	81.96
5.	Label Notch	87.20
6.	Total Height (Incl. Cap)	170

**Overflow Capacity 1180 ml**

**Material in use PET**



**SPC-SP83P04**

S.No.	Parameter	Cap Size In MM (+0.5)
1.	Body Dia	83 mm 84.66
2.	Height (without Cap)	189.23
3.	Neck (without Thread)	79.85
4.	Neck Dia (Incl. Thread)	82.93
5.	Label Notch	163
6.	Total Height (Incl. Cap)	193.06

**Overflow Capacity 1030 ml**

**Material in use PET**



**SPC-SP73P05**

S.No.	Parameter	Cap Size In MM (+0.5)
1.	Body Dia	83 mm 93.50, 95.97
2.	Height (without Cap)	162.24
3.	Neck (without Thread)	77.98
4.	Neck Dia (Incl. Thread)	82.34
5.	Label Notch	137.51
6.	Total Height (Incl. Cap)	163.15

**Overflow Capacity 980 ml**

**Material in use PET**



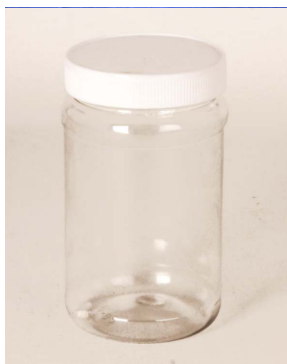
**SPC-SP73P01**

S.No.	Parameter	Cap Size In MM (+0.5)
1.	Body Dia	73 mm 90.90
2.	Height (without Cap)	158.41
3.	Neck (without Thread)	70.12
4.	Neck Dia (Incl. Thread)	72.55
5.	Label Notch	95.62
6.	Total Height (Incl. Cap)	160.93

**Overflow Capacity 1000 ml**

**Material in use PET**





**SPC-SP73P02**

S.No.	Parameter	Cap Size In MM (+0.5)
1.	Body Dia	76.64
2.	Height (without Cap)	134.50
3.	Neck (without Thread)	71.13
4.	Neck Dia (Incl. Thread)	72.73
5.	Label Notch	87.13
6.	Total Height (Incl. Cap)	135.98

**Overflow Capacity 580 ml**

**Material in use PET**



**SPC-SP73P03**

S.No.	Parameter	Cap Size In MM (+0.5)
1.	Body Dia	74.70
2.	Height (without Cap)	125.90
3.	Neck (without Thread)	70.80
4.	Neck Dia (Incl. Thread)	73.40
5.	Label Notch	98
6.	Total Height (Incl. Cap)	127.15

**Overflow Capacity 510 ml**

**Material in use PET**



**SPC-SP73P04**

S.No.	Parameter	Cap Size In MM (+0.5)
1.	Body Dia	74
2.	Height (without Cap)	131.17
3.	Neck (without Thread)	70.34
4.	Neck Dia (Incl. Thread)	72.86
5.	Label Notch	48.51
6.	Total Height (Incl. Cap)	133.70

**Overflow Capacity 560 ml**

**Material in use PET**



**SPC-SP63P01**

S.No.	Parameter	Cap Size In MM (+0.5)
1.	Body Dia	73.88
2.	Height (without Cap)	130.93
3.	Neck (without Thread)	60.05
4.	Neck Dia (Incl. Thread)	61.48
5.	Label Notch	96.50
6.	Total Height (Incl. Cap)	132.52

**Overflow Capacity 500 ml**

**Material in use PET**



**SPC-SP63P02**

S.No.	Parameter	Cap Size In MM (+0.5)
1.	Body Dia	66.72
2.	Height (without Cap)	89.70
3.	Neck (without Thread)	59.53
4.	Neck Dia (Incl. Thread)	62.04
5.	Label Notch	5
6.	Total Height (Incl. Cap)	91.87

**Overflow Capacity 280 ml**

**Material in use PET**



**SPC-SP53P01**

S.No.	Parameter	Cap Size In MM (+0.5)
1.	Body Dia	63.35
2.	Height (without Cap)	90.39
3.	Neck (without Thread)	49.37
4.	Neck Dia (Incl. Thread)	51.98
5.	Label Notch	49.74
6.	Total Height (Incl. Cap)	92.23

**Overflow Capacity 250 ml**

**Material in use PET**



**SPC-SP53P02**

S.No.	Parameter	Cap Size In MM (+0.5)
1.	Body Dia	54.95
2.	Height (without Cap)	76
3.	Neck (without Thread)	48.83
4.	Neck Dia (Incl. Thread)	51.35
5.	Label Notch	40.90
6.	Total Height (Incl. Cap)	78.35

**Overflow Capacity 180 ml**

**Material in use PET**



**SPC-SP46P01**

S.No.	Parameter	Cap Size In MM (+0.5)
1.	Body Dia	73.43
2.	Height (without Cap)	132.31
3.	Neck (without Thread)	42.37
4.	Neck Dia (Incl. Thread)	43.35
5.	Label Notch	75
6.	Total Height (Incl. Cap)	138

**Overflow Capacity 450 ml**

**Material in use PET**



**SPC-SP46P02**

S.No.	Parameter	Cap Size In MM (+0.5)
1.	Body Dia	57.60
2.	Height (without Cap)	115.76
3.	Neck (without Thread)	42.20
4.	Neck Dia (Incl. Thread)	43.48
5.	Label Notch	43.48
6.	Total Height (Incl. Cap)	124.90

**Overflow Capacity 280 ml**

**Material in use PET**



**SPC-SP46P03**

S.No.	Parameter	Cap Size In MM (+0.5)
1.	Body Dia	59.53
2.	Height (without Cap)	123.87
3.	Neck (without Thread)	42.70
4.	Neck Dia (Incl. Thread)	43.05
5.	Label Notch	70
6.	Total Height (Incl. Cap)	130.68

**Overflow Capacity 280 ml**

**Material in use PET**



**SPC-SP38P01**

S.No.	Parameter	Cap Size In MM (+0.5)
1.	Body Dia	54.54
2.	Height (without Cap)	116.12
3.	Neck (without Thread)	35.42
4.	Neck Dia (Incl. Thread)	37.09
5.	Label Notch	72
6.	Total Height (Incl. Cap)	121.27

**Overflow Capacity 200 ml**

**Material in use PET**



**SPC-SP38P02**

S.No.	Parameter	Cap Size In MM (+0.5)
1.	Body Dia	48.70
2.	Height (without Cap)	87.50
3.	Neck (without Thread)	34.25
4.	Neck Dia (Incl. Thread)	36.80
5.	Label Notch	59.25
6.	Total Height (Incl. Cap)	88.30

**Overflow Capacity 120 ml**

**Material in use PET**



**SPC-SP38P03**

S.No.	Parameter	Cap Size In MM (+0.5)
1.	Body Dia	38 mm 42.62
2.	Height (without Cap)	87.22
3.	Neck (without Thread)	34.68
4.	Neck Dia (Incl. Thread)	36.71
5.	Label Notch	63.5
6.	Total Height (Incl. Cap)	88.76

**Overflow Capacity 100 ml**

**Material in use PET**



**SPC-SP38H01**

S.No.	Parameter	Cap Size In MM (+0.5)
1.	Body Dia	38 mm 48.89
2.	Height (without Cap)	80.56
3.	Neck (without Thread)	34.47
4.	Neck Dia (Incl. Thread)	36.75
5.	Label Notch	61
6.	Total Height (Incl. Cap)	81.55

**Overflow Capacity 120 ml**

**Material in use HDPE**



**SPC-SP38H04**

S.No.	Parameter	Cap Size In MM (+0.5)
		<b>38 mm</b>
1.	Body Dia	53.80
2.	Height (without Cap)	92.98
3.	Neck (without Thread)	34.97
4.	Neck Dia (Incl. Thread)	37.12
5.	Label Notch	<b>54.10</b>
6.	Total Height (Incl. Cap)	93.82

**Overflow Capacity 150 ml**

**Material in use HDPE**



**SPC-SP38H05**

S.No.	Parameter	Cap Size In MM (+0.5)
		<b>38 mm</b>
1.	Body Dia	49.25
2.	Height (without Cap)	94.35
3.	Neck (without Thread)	35.09
4.	Neck Dia (Incl. Thread)	36.95
5.	Label Notch	<b>62.81</b>
6.	Total Height (Incl. Cap)	96.65

**Overflow Capacity 105 ml**

**Material in use HDPE**





**SPC-SP38H02**

S.No.	Parameter	Cap Size In MM (+0.5)
1.	Body Dia	38 mm 48.89
2.	Height (without Cap)	80.56
3.	Neck (without Thread)	34.47
4.	Neck Dia (Incl. Thread)	36.75
5.	Label Notch	61
6.	Total Height (Incl. Cap)	81.55

**Overflow Capacity 120 ml**

**Material in use HDPE**



**SPC-SP38H03**

S.No.	Parameter	Cap Size In MM (+0.5)
1.	Body Dia	38 mm 42.40
2.	Height (without Cap)	39.50
3.	Neck (without Thread)	35.20
4.	Neck Dia (Incl. Thread)	36
5.	Label Notch	72
6.	Total Height (Incl. Cap)	4.60

**Overflow Capacity 50 ml**

**Material in use PET**



**SPC-SP33H01**

S.No.	Parameter	Cap Size In MM (+0.5)
1.	Body Dia	82.72
2.	Height (without Cap)	232.50
3.	Neck (without Thread)	30.07
4.	Neck Dia (Incl. Thread)	31.10
5.	Label Notch	171.57
6.	Total Height (Incl. Cap)	233

**Overflow Capacity 1090 ml**

**Material in use HDPE**



**SPC-SP33H02**

S.No.	Parameter	Cap Size In MM (+0.5)
1.	Body Dia	68.44
2.	Height (without Cap)	211.05
3.	Neck (without Thread)	30.03
4.	Neck Dia (Incl. Thread)	31.73
5.	Label Notch	126.46
6.	Total Height (Incl. Cap)	212.05

**Overflow Capacity 660 ml**

**Material in use HDPE**



**SPC-SP33/03**

S.No.	Parameter	Cap Size In MM (+0.5)
1.	Body Dia	33 mm 69.61
2.	Height (without Cap)	251.79
3.	Neck (without Thread)	28.70
4.	Neck Dia (Incl. Thread)	30.39
5.	Label Notch	230
6.	Total Height (Incl. Cap)	252.79

**Overflow Capacity** 660 ml

**Material in use** HDPE



**SPC-SP25H01**

S.No.	Parameter	Cap Size In MM (+0.5)
1.	Body Dia	25 mm 91.80
2.	Height (without Cap)	150.45
3.	Neck (without Thread)	21.20
4.	Neck Dia (Incl. Thread)	23.45
5.	Label Notch	121.45
6.	Total Height (Incl. Cap)	154

**Overflow Capacity** 250 ml

**Material in use** HDPE



**SPC-SP45H01**

S.No.	Parameter	Cap Size In MM (+0.5)
1.	Body Dia	127.30, 195.50
2.	Height (without Cap)	296.50
3.	Neck (without Thread)	35.62
4.	Neck Dia (Incl. Thread)	36.78
5.	Label Notch	146.02
6.	Total Height (Incl. Cap)	303

**Overflow Capacity 5420 ml**

**Material in use HDPE**



**SPC-SP45H02**

S.No.	Parameter	Cap Size In MM (+0.5)
1.	Body Dia	165.50, 130.50
2.	Height (without Cap)	293
3.	Neck (without Thread)	49.89
4.	Neck Dia (Incl. Thread)	51.86
5.	Label Notch	142
6.	Total Height (Incl. Cap)	295.50

**Overflow Capacity 5460 ml**

**Material in use HDPE**





**SPC-SP45H03**

S.No.	Parameter	Cap Size In MM (+0.5)
1.	Body Dia	142
2.	Height (without Cap)	290.50
3.	Neck (without Thread)	33
4.	Neck Dia (Incl. Thread)	37
5.	Label Notch	161
6.	Total Height (Incl. Cap)	293

**Overflow Capacity 5400 ml**

**Material in use HDPE**



**SPC-SP45H04**

S.No.	Parameter	Cap Size In MM (+0.5)
1.	Body Dia	131.90, 196
2.	Height (without Cap)	272
3.	Neck (without Thread)	34.24
4.	Neck Dia (Incl. Thread)	35.96
5.	Label Notch	141.73
6.	Total Height (Incl. Cap)	273

**Overflow Capacity 4700 ml**

**Material in use HDPE**



MEASUREMENTS	Sp1	Sp2	Sp3	Sp4
SCOOP WIDTH(mm)	30	30	40	46.50
SCOOP LENGTH(mm)	80	72.50	90	97.30
HANDLE WIDTH(mm)	14.5	9	10	13
SCOOP DEPTH(mm)	15	9	22.50	49
SCOOP VOLUME(ml)	5	5	22	75



MEASUREMENTS	1MC25	2MC28	3MC28
INTERNAL DIA(MM) at bottom	26.20	29.85	46.82
DEPTH(mm)	18.25	18.90	73.02
VOLUME(ml)	10	13	136

# Caps





**S U P E R**  
P L A S T O C H E M

## **SUPER PLASTO CHEM**

Corporate Office :

Plot No. 156, Phase 2, Industrial Area,  
Chandigarh - 160 002

Group Companies

**SNEHA POLYMERS**, Baddi

**PREET PLASTICS**, Chandigarh

Phone:

+91 981 464 1037, +91 828 8068 797, + 91 172 4042283

Email :

md@superplasto.com, superplasto797@gmail.com

[www.superplastochem.com](http://www.superplastochem.com)